

DESIGN NEWS

Volume 13 Issue 1

April 2005

CENTURY FURNITURE

The Century of Kelly Hoppen:
A Design Star Brings Her Brilliance to Furniture.

Call it cool, calm, and collected. Call it East meets West. Call it contemporary with a hint of spiritual depth. Or, simply resist the need to label and acknowledge that the Kelly Hoppen look is the look of the early 21st century. The crème de la crème, from style-struck superstars to royalty and international corporations, want it. And the British designer is happy to oblige. Her aim has always been to bring Europe to the U.S.A. Kelly has an idealist approach in fusing the old world European Classicism with a breath of modern, thus creating a timeless elegance.



Platform Bed

finished in Black—an uncomplicated color appropriate for a designer heralded for her use of neutrals.

The upholstered seating in the collection further reveals the designer's love of texture and sudden, surprising splashes of color. The fabrics in the collection exude luxury and timelessness; linens, silk mohairs, velvets, suedes, plain and exotic leathers and silks are always used in a subtle and sophisticated way. These fabrics are the building blocks of her intimate environments. Kelly approaches fabrics like a couturier would dress a client. Detail, quality, and finish are the keys to her success.

TOWN AND COUNTRY has added a number of select pieces in a wonderful new distressed finish with an assortment of beautiful colors.

(Continue on page 3)



Storage Dresser/Sideboard

This furniture is targeted to a sophisticated and design savvy consumer. Its coolly simple. Its disciplined elegance is based on Asian ideals like balance and symmetry. Its diminutive in scale yet comfortable in a restrained way. People will either get it; or they won't and that's fine with Hoppen.

Much of the collection is crafted in Flormorado and white oak veneers and enhanced with areas of upholstery, steel, or black glass. The wood is

HOUSE & GARDEN
The Best on The Best Survey
Sofas - Century #9
Chairs - Century #8



Club Chair



Pearson®

Personal Choice II Expanded

Personal Choice II is the "smalling down" of the original program that lets you design your own sofa by selecting your arm, base and back pillow style to create a unique sofa that can be a 66" loveseat or a 102" ex-



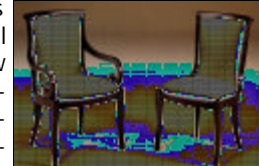
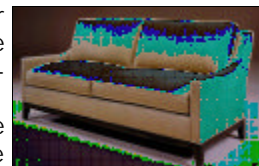
Personal Choice II Sofa

HOUSE & GARDEN - April 2005
The Best on The Best Survey
Sofas - Pearson #6
Chairs - Pearson #6

tra long sofa. Personal Choice II is smaller in scale and proportion than the original program. Think lofts, condos and retirement homes where smaller scale and unique upholstered furniture is required.

Meridian is the established name for Pearson's transitional frames. The new introductions included an S-curved back exposed wood base sofa and Meridian Sofa & Dining Chair chair frame that is all about style and attitude. A new softly curved dining chair and occasional side chair both say contemporary luxury. Fabrics were soft, and textural with some wonderful basics. Warm tones of brown, green, gold and orange. Speaking of texture, mohair in five warm shades was the perfect companion for two new Deco patterns in rust and gold tones.

The new fabrics will be in the showroom shortly and we already have a Personal Choice II angled sofa available for "tush testing" as well as several other Pearson frames.



Meridian Sofa & Dining Chair

Ferguson Copeland, Ltd.



East Winds Armoire in Manoa

EAST WINDS

Developed off a single piece from October, the East Winds collection includes an armoire in Manoa cane, the light finish shown here, as well as a darker tone. Other materials include dyed water hyacinth accents, and polished and hammered hardware.

Ferguson expanded further a number of previous collections as well as showing the new Guy Chaddock pieces.



Portuguese Wing Chair



Villa D'Este King Bed

HARDEN

This spring Harden expanded their Tapestry collection. Classic lines in seating and occasional pieces are re-defined and relaxed in strong Malacca rattan with leather bindings and twill accents. Among the rattan offerings is a clever bistro table that converts from dining table height to bar height with a flip of the legs; this table features the tactile treasure of a crushed bamboo top.



Hi-low Bistro Table

HOUSE & GARDEN Special Designer Survey - "When You're Feathering your Nest, you want it to be the Tops. House & Garden asked the country's leading Interior Designers to rate the places they go for everything. Here's what they told us:" **RANKED WITHIN THE TOP TEN**

PEARSON - CENTURY FURNITURE - HICKORY CHAIR



Lorts Manufacturing introduced five new distinct dinette sets with coordinating chairs.

- ? Draw leaf Dining Table, featuring two 22 inch end leaves, elegant cabriole legs and a quilted hand carved parquet style top.
- ? Carved Base Dining table, classic 60 inch by 42 inch table with one 24 inch leaf.
- ? Tapered Leg Dining Table, timeless tapered leg 48 inch round table with one 24 inch leaf.
- ? Fluted Leg Pedestal Table, 48 inch round table with simple English tailored spindle leg and one 24 inch leaf.
- ? Baluster Leg Dining Table, Jacobean hand turned wide leg table, with a splitting base with leaf insertion makes this 48 inch round table extremely steady.

Another special feature at this market was the Barley Twist occasional collection with exciting new design enhancements. An ensemble of beautiful occasional pieces from cocktail and console tables to a twisted drop-leaf triangle table created with the unique touches and quality you've come to expect from Lorts.



Barley twist cocktail table



Carved base Dining Table



Dinette Chair

HICKORY CHAIR®

Alexa Hampton's new furniture line for Hickory Chair reveals the hand of a visionary designer who always considers the way people actually live. Her more than 40 thoughtful and divergent pieces range from a grandly-scaled ottoman and TV cabinet to a demure dressing table and tufted bed. Hampton hopes to encourage people to live with furnishings from various eras and collections to achieve a more individual expression of themselves and their interests.



Alexa Hampton 's Console/Writing Desk

As a designer, empowering clients to make personal choices is Hampton's fundamental priority, helping to direct their tastes and inform them about the styles in which they would like to live. The well-educated, well-traveled daughter of late design icon Mark Hampton expects her new furniture will do the same. This collection is a fresh twist on the classical training she received from her father, whose business legacy she now also proudly oversees.

While Hampton has no interest in exact reproductions, she believes there are good reasons—such as comfort and suitability—why certain styles have endured. Her designs seek to reinterpret and reinvigorate the classic forms she loves, and to which she's likely to add an occasional flourish, as with the ebony Maria End Table, the base of which is constructed of myriad twisted tendril-like legs. While each piece has a distinct personality, versatility is also a built-in virtue of the line and it speaks to Hampton's desire to endorse individuality. A bookcase/display cabinet in kingwood has compartments for housing a television in either high or low positions. The soft light from an optional mounted fixture plays off the book spines shelved in the upper half of the piece.

Hampton's varied collection exemplifies her design philosophy. She values different points of view because she believes her ability to take the pulse of diverse lifestyles suits her service-oriented profession. Such is the solid foundation of Hampton's refined taste and knowledge that trends pose no threat to her identity—or by extension, to that of her classic new furniture designs.

HOUSE & GARDEN Best of the Best Survey **CHAIRS - Hickory Chair #10**

(Continue from page 1)



New Town & Country

Regent is a fresh, stylish, 21st century interpretation of the homey, accessible, "dressed-down" neoclassic furniture that swept post-Napoleonic Europe. Crafted from European Birch and Yew veneers, this bedroom, dining room and occasional collection has a light, clean, almost modern feel. Yet its elements—overhanging tops, diamond motifs, reeded pilasters, the rare ebonized accent—are undeniably classic



Tavolo "Certosa" - (94.5" x 47.25")

Period 1500's—Bologna Italy

The substantial harp shaped base combines historical details with delicate inlays. It supports the hand-crafted top of reclaimed robinia wood, from the acacia family.

HEKMAN

Utilizing the classic forms from the Napoleonic period as a foundation for the design of this latest Hekman collection, they wrapped them in leafy heart cherry veneers with rich walnut burl boarders, all hi-lighted with satiny silver hardware. Each piece in this collection is finished in a French roast coffee bean color enhancing the rich Cherry and Walnut veneers and complimented with a deep waxy patina. The result is a fresh transitional statement somewhat juxtaposed to their original traditional roots.



Console Table



Regent Panel Bed
Part of Century Destinations

DESIGN PROFESSIONALS, INC.
275 Market Street Suite #115
Minneapolis, MN 55405

PRSR STD
U. S. POSTAGE
PAID
MINNEAPOLIS, MN
PERMIT NO. 3395

Inside This Issue

Spring 2005 Market News

DESIGN NEWS

Guy Chaddock & Co.

As most of you know Guy Chaddock had some labor problems and ceased operations in California in early 2004. One of our long time exclusive vendors Ferguson Copeland, Ltd. purchased the intellectual property rights to the Guy Chaddock line. Ferguson Copeland Ltd. is a company known for their custom finishing capacity and a company that understands design. They also hired Dave Edwards, president of Guy Chaddock for the past 14 years. Dave has been able to bring a very talented group of ex-Guy

Chaddock employees with him to a new home in North Carolina.

It is Ferguson Copeland's intention



to maintain the Guy Chaddock name and run it as an independent operation. However, it is with the

combined experience and expertise that they feel they can successfully capture the essence of Guy Chaddock. We saw the first set of floor samples at market and would agree. They have done an outstanding job. It is their intention to start with the core classics of the line and to build from there.

We look forward to the opportunity to bring you this very exciting new company with such an outstanding past. Floor samples should start arriving this summer.

