

DESIGN NEWS

Volume 15 Issue 1

Spring 2007

CENTURY FURNITURE

Living Large...and Small

Our nation's homes are getting larger. They're also getting smaller. Unlikely as it may sound, it's true. Affluent and upper-middle-class Americans are choosing one of two divergent paths: they're building grand, lavishly appointed homes in the suburbs or the exurbs...or they're moving into much smaller lofts and condos in the heart of the city.

Century introduced two very different collections. *Castellan*, a collection of updated traditional furniture designed for twenty-first-century mansions, offers proportions and details scaled to harmonize visually with the spectacular rooms



Castellan Cocktail Table

comparison, a cocktail table from *Castellan* actually dwarfs a dining table from *Metro Luxe!*" notes Tashjian

Its *Traditional Classics* Banquet Table is a good example. It seats an astonishing sixteen dining guests. Because it's customizable, however—one can order an infinite number of 44-inch sections—it could theoretically outfit the world's most immense dining room. Compare that to the relatively tiny *Metro Luxe* dining room (which comfortably seats six), and you'll quickly realize that Century is highly attentive to individual lifestyle needs—however disparate they may be. "Customization is the basis of our entire business philosophy," notes Edward Tashjian, Vice President of Marketing for Century Furniture. "Because we make most of our furniture here in America, we can truly give the customer exactly what they



Pearson®

Linens and Velvets continue to be the textures of choice

Pearson introduced over 20 new products to its extensive upholstery line. These pieces feature shapely silhouettes, varied sizes and exceptional comfort; all features important in today's interiors.

Sofas are as interesting from the back view as they are from the front. Some exceptional pieces introduced



Metro Luxe Dining Table

for which it's destined. (A historical word, "castellan" means "the governor of a castle.") *Metro Luxe* is international-scale furniture designed for cozy, yet elegant living spaces; it has the sleek styling, refined details and fresh finishes for which Century is known. "Amazingly, in an area-to-area comparison,



Pearson 2438-10 Sofa

this market include: A glamorous, barrel shaped sofa. The generous rolled arms continue across the back of the sofa, creating a long soft curve. The bench seat cushion is also bowed in the front, and is raised over a tall box pleated skirt. The sofa is further accented with a mutli pillow, layered back.



Century Copper Tree Settee



Pearson 159 Cocktail ottoman

An oval cocktail ottoman features a tight low seat, with a tall box pleat skirt.

(Continued on page 3)

(Continued on page 3)

Ferguson Copeland, Ltd.



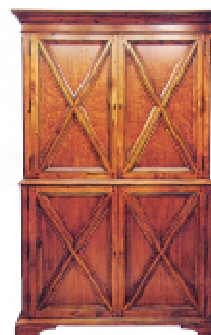
Ferguson Copeland's new French collection.



Larry Laslo defines the Modern Classic style with his French Deco designs, reminiscent of the Parisian salon, for Ferguson Copeland.

HEKMAN

MOUNTAIN RETREAT



Hekman adds significant pieces to Mountain Retreat. A sophisticated approach to lodge, making it at home in a mountain resort or summer home.

Guy Chaddock & Co.



New wood outlined upholstered chair

Guy Chaddock introduced a new large scale oval table, a great new bed and continues to expand their upholstery.

One example of this is a dramatic Jacobean loveseat. Shown here done in a suede and leather blend with an Old World tapestry in green, rust, gold and cream.



DIA Entertainment Console

Design Institute of America has been through some transitions recently, however they are back and with some great new products. The new chrome finishes have never looked so good. Brass is being re-introduced with their first piece this market.

They are also offering an entire custom product group in stainless steel which is being produced domestically.

LORTS

New Lorts Sideboard with fluted column base



Lorts new Game table and counter/bar stools



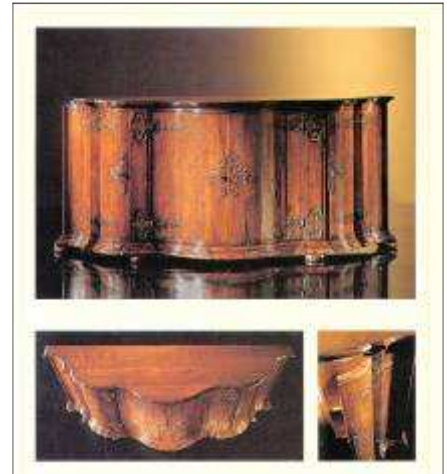
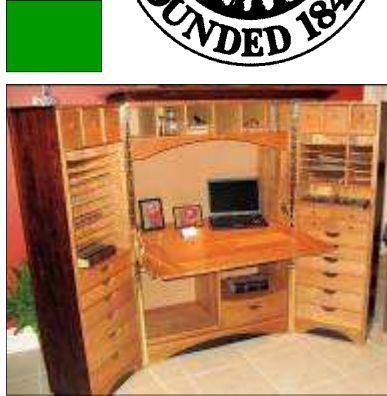
Lorts new game chair

HARDEN

HARDEN BACKS LIVING CANOPY PRO-



THE GIORGIO BROTTO COLLECTION



This handsome, grand credenza made with solid antique oak, and its top in solid walnut, is inspired by the Venetian period in Italy—the second half of the 18th century. This is part of the Giorgio Brotto Collection, a collection of special pieces made by Giorgio Brotto over the past 40 years.

WEBSITE

www.dprof.com

You will find links to our vendors for quick and convenient product searches and selection. Or if you would prefer, just let us know what you are looking for and we can email you photos.



Harden had a full assortment of new introductions for their casegood and upholstery groups. They also expanded their very successful Tapestry line with some distinctive new pieces.

Beyond the concerns for new product Harden has also backed the Living Canopy Project. A significant initiative designed to create awareness about the environment and generate funds for land and water restoration efforts.

(Continued from page 1) **PEARSON**

Taking its cues from its classic English cousin, a shapely barrel back wing chair was shown featuring a tight back raised over a loose boxed seat cushion and tightly rolled arms on turned maple legs accented with ferrules and casters.

Colors ranged from opulent burnished golds and coppers, to bright clear greens, mango, and turquoises.

(Continued from page 1) **CENTURY**

want, and we can do it fast.” Of course, customization means far more than size. It means offering a variety of finishes, upholstery fabrics and other options too numerous to cite. The photo at right shows similar china cabinets from *New Traditional*, introduced in 2006, and *Metro Luxe*. It illustrates not only the size difference between collections, but also how different finish choices can shift the entire look of a design.



China Cabinets from New Traditional and Metro Luxe

DESIGN PROFESSIONALS, INC.
275 Market Street Suite #115
Minneapolis, MN 55405

PRSR STD
U. S. POSTAGE
PAID
MINNEAPOLIS, MN
PERMIT NO. 3395

Inside This Issue

Spring 2007 Market News

DESIGN NEWS

HEIRLOOM
by CENTURY



Heirloom continues to add traditional classic product and blend that with a broad and rich fabric selection. It is becoming a wonderful resource for that timeless classic look and this market

showed clearly a movement back to classic forms.

The spring market palette included both edgy and comfortable colors—evolving from copper and bronze shades to pale mineral blue and mocha combinations as well as a strong, new emerald green. Heirloom featured many pieces in these bright new market colors and fabulous COM fabrics, showing off their exquisite tailoring.

